



NZ BUSINESS &
PARLIAMENT TRUST

NZBPT NEWS

Issue 17
2023

TO ADVANCE AND ENCOURAGE BUSINESS UNDERSTANDING OF PARLIAMENT AND
PARLIAMENTARIANS UNDERSTANDING OF THE BUSINESS COMMUNITY OF AOTEAROA NEW ZEALAND



Seminar 2 Panel

INSIDE THIS ISSUE

- PAGE 1 - 3 • Three Parliamentary Seminars
- PAGE 4 - 4 • President's Dinners
- PAGE 5 - 5 • The Annual Meeting
- PAGE 6 - 6 • Business Attachments
• New Associate Members
- PAGE 7 - 7 • Speaker of the House Visits
Corporate Members
- PAGE 8 - 8 • Schools
- PAGE 9 - 9 • University Prizes
- PAGE 10 - 10 • Deloitte Event
- PAGE 11 - 11 • Auckland Corporate Network Event
• New COMMS Intern
- BACK PAGE • Corporate Members List

THREE PARLIAMENTARY SEMINARS

April, June and August

Our Parliamentary Seminars offer a comprehensive insight into how Government and Parliament works for our corporate members. This year, the Trust held three Parliamentary Seminars. April's seminar was Exercising Government through Parliament while June was centred on the Machinery of Government. Our last seminar in August was a special one focused on the General Election, the closing of one Parliament and the formation of a new Parliament.

THREE PARLIAMENTARY SEMINARS CONTINUED...



Participants at these seminars had the opportunity of listening to a diverse array of speakers from parliament, government, various ministries and agencies, and the press gallery.

These insightful discussions provided a deeper understanding of the intricacies of governance and the functions of parliament.





PRESIDENT'S DINNERS JUNE AND AUGUST

The Trust had the privilege of arranging two President's Dinners for its Chief Executives and leadership team representatives with each dinner being hosted by the Rt Hon Adrian Rurawe MP Speaker of the House of Representatives in his role as President of the Trust.

Originally the Prime Minister was to have attended the June dinner but with overseas travel to China, we were delighted to welcome the Hon Carmel Sepuloni as Acting Prime Minister. The dinner provided a unique opportunity for the business community and the Acting Prime Minister to have a meaningful dialogue.

THE FIRST PRESIDENT'S DINNER

Corporate attendees at the first President's Dinner included Michael Singleton, Chief Strategy and Stakeholder Officer of Christchurch International Airport, Amanda Southcombe, General Manager GSK, Craig West, General Manager Downer NZ Ltd, Nicola Law, CFO Z Energy, David Prentice, CEO Manawa Energy, Amanda Whiting, CEO IAG, and Ross Hunt, Company Director at Pfizer.

THE SECOND PRESIDENT'S DINNER

At the second President's Dinner in August, Brooke Van Velden MP Deputy Leader of the ACT Party and a member of the Trustee Council, and Hon Paul Goldsmith MP, Shadow Spokesperson on Justice attended as the parliamentary guests. Corporate guests included André Lovatt, CIO of Auckland Airport Ltd, Craig Baldie, Managing Director Lion NZ, Stephen Gilmore, Chief Investment Officer NZ Superfund, Ross Young, Head of Government Relations Woolworths Ltd, Kerry Watson, Head of External Affairs OceanaGold Waihi, and Craig Glover, Policy and Government Relations Lead at Merck Sharp & Dohme.

Our leadership dinners facilitate constructive conversations and contribute to strengthening the connection between the spheres of business and government.



THE ANNUAL MEETING

The 31st Annual General Meeting was held on 27 June. Four new trustees were elected replacing retiring Trustees Nancy McConnell (October 2022) and Guy Waipara (June 2023). Two additional positions had been created due to changes to the Trust Deed the previous year.



INTRODUCING OUR NEW TRUSTEES

We extend a warm welcome to Nirupa George from SkyCity Entertainment Group, Brent McNulty from TVNZ, Bryce Davies from IAG and Helene Toury from Downer NZ who was originally seconded to the Board in December 2022.



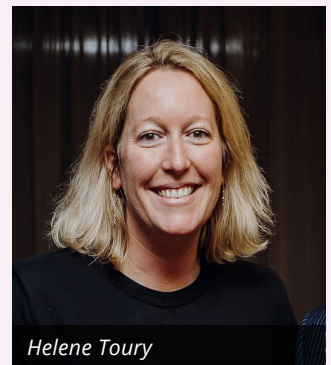
Nirupa George



Brent McNulty



Bryce Davies



Helene Toury

THE BOARD AT WORK

The Trust's Board meets four times a calendar year and oversees the governance and strategic direction of the Trust as well as approving operational matters. Image shows the Board at their June meeting.



(Left to Right) Chris Blenkiron, Tim van de Molen MP, Joanne Mahon, Anna Lorck MP, Chris Litchfield, Peter Griffiths (Chair), Darryl Stevens (CE) and Helene Toury

BUSINESS ATTACHMENTS AND NEW ASSOCIATE MEMBERS

The Business Attachment programme provides an invaluable opportunity for Members of Parliament to better understand the contribution businesses make to the economy and the community.

The Trust was fortunate to have several successful Business Attachments this year. Dr. Tracey McLellan MP spent three days with Hato Hone St. John, Simon Court MP completed his attachment at Foodstuffs North Island Ltd, and in August Joseph Mooney MP with Simon O'Connor MP undertook a one-day attachment with NZ Post Ltd.

Brooke van Velden MP received her Associate Membership at our last President's Dinner for completing her attachment with the Ports of Auckland last year.

We thank our corporate members for arranging programmes and hosting the Members of Parliament.



Dr Tracey McLellan MP



Brooke van Velden MP



Simon Court MP



Simon O'Connor MP

SPEAKER OF THE HOUSE VISITS CORPORATE MEMBERS



Mr Speaker with Peter Jiang, Coca Cola Europacific Partner's Head of Public Affairs and Communications



Mr Speaker at Southern Cross Brightside Hospital in Epsom with Chief Executive Officer Chris White, and Gerda du Preez, the hospital's General Manager

The Speaker of the House Rt Hon Adrian Rurawhe MP has undertaken visits to several corporate members during the year. In April he opened the new offices of Fijitsu Ltd in the Bowen Campus behind Parliament Buildings and met with representatives from Downer NZ Ltd for a presentation on infrastructure projects in Wellington including a site visit to Te Ara Tupua

In May the Speaker visited Coca Cola Europacific Partners and Southern Cross Brightside Hospital in Epsom, Auckland and Rio Tinto (NZ Aluminium Smelters Ltd) in Invercargill and following the adjournment of Parliament, an engagement with KiwiRail Ltd in Wellington.

We warmly thank the Speaker for undertaking these visits.



Mr Speaker receiving a tour of Rio Tinto



Mr Speaker with Simon King, External Affairs Director at Rio Tinto

SCHOOLS

The Travel Fund Programme for Schools is designed to provide small grants to help offset travel costs and thereby encouraging schools to undertake formal visits to Parliament, often in conjunction with camps

and programmes encompassing a range of civic visits and fun activities that the Capital has to offer. School visits have been steadily returning to pre pandemic levels and to date have supported 45 schools this year.



Pītau-Allenvale School with Hon Priyanca Radhakrishnan MP



Mangere College outside Parliament House



Kamo Intermediate in the Debating Chamber



Halfmoon Bay and Tapora School visit

UNIVERSITY PRIZES

The Trust currently sponsors four tertiary prizes for postgraduate research into the role of politics and public policy.

2022 RECIPIENTS

Marewa Taiepa Sheilds University of Otago
Susanna Barthow University of Waikato

2023 RECIPIENTS

Logan Rainey University of Auckland
Ashleigh Keenan University of Otago
Georgina Fulton University of Canterbury

We were pleased that Susanna Barthow (2022 Waikato University recipient) attended our June seminar and Marewa Taiepa Sheilds (2022 University of Otago recipient) the August seminar. Certificates of Attainment were presented to both recipients.

We are also pleased to announce Ashleigh Keenan as the University of Otago's 2023 prize recipient and Logan Rainey, University of Auckland recipient for 2023. We are hoping that Logan can attend the Auckland Corporate Network event in November. Ashleigh looks forward to attending a parliamentary seminar in 2024.



Ashleigh Keenan



Susanna Barthow



Marewa Taiepa Sheilds

DELOITTE EVENT



On 3 August, the Trust in partnership with Deloitte, hosted a presentation by the Hon Beth McGrath, leader for government and public services at Deloitte, based in the USA.

Beth McGrath's career spans over 25 years in the United States government sector. Before joining Deloitte, Beth was confirmed by the US Senate as the Deputy Chief Management Officer for the Department of Defence (DoD). In her role, she advises government and commercial clients on clients on global trends, leadership, digital transformation, workplace, workforce, and IT portfolio management and more. She is committed to strengthening synergies across global industries and public services.

The Trust would like to thank Beth and Deloitte for an informative and enlightening event. Beth's insights added significant value to our corporate attendees.

If there is interest in organising a similar event with us, featuring a distinguished guest speaker at Parliament, the Trust is open to exploring such opportunities. Our corporate members' engagement and ideas for collaboration are welcome as we continue to foster meaningful discussions and partnerships.



AUCKLAND CORPORATE NETWORK EVENT

IN ASSOCIATION WITH TOWER INSURANCE
TUESDAY 28 NOVEMBER 2023

Expanding upon the success of last year's Auckland Corporate Network event held at the ANZ Centre, we are excited to announce our second Auckland Corporate Network event. This event will be held in collaboration with Tower Insurance on Tuesday 28 November at their Head Office, Fanshawe Street, Auckland CBD.

Our Auckland Corporate Network event represents our commitment to fostering connections and promoting collaboration among our corporate members and parliamentarians based in Auckland. It promises to be an evening of networking, engagement, and meaningful interactions.



NEW COMMS INTERN

The Trust welcomed Josi Tamu to the Secretariat in May as our new Social Media & Comms Intern. Josi is a second-year Commerce student at Victoria University of Wellington majoring in Economics and Finance.

Before joining the Trust, Josi was a Social Media Assistant at Volunteer Wellington and also Head of Communications at Victoria University of Wellington Commerce Students' Society.

We look forward to working alongside Josi as she contributes her skills and enthusiasm to the Trust's mission.

CORPORATE MEMBERS

- | | | |
|--|---|--------------------------------|
| 1. AbbVie Ltd | 26. Manawa Energy Ltd | 51. Subaru of New Zealand |
| 2. Airways Corporation of NZ Ltd | 27. Marsden Maritime Holdings Ltd | 52. Synlait Milk Limited |
| 3. ANZ (New Zealand) Ltd | 28. McDonald's Restaurants NZ Ltd | 53. Talley's Group Ltd |
| 4. ASB Bank | 29. Merck Healthcare Pty Ltd | 54. Television New Zealand Ltd |
| 5. Auckland International Airport Ltd | 30. Merck Sharp & Dohme (NZ) Ltd | 55. The Warehouse Group Ltd |
| 6. Bank of New Zealand Ltd | 31. Mercury NZ Ltd | 56. Tower Insurance Ltd |
| 7. Barenbrug New Zealand Ltd | 32. Meridian Energy | 57. Transpower New Zealand Ltd |
| 8. Christchurch Int'l Airport Ltd | 33. Metro Performance Glass NZ Ltd | 58. Vector Ltd |
| 9. Coca-Cola Europacific Partners Ltd | 34. NZ Post Group | 59. Veolia Ltd |
| 10. Contact Energy | 35. NZ Steel Ltd | 60. Westpac |
| 11. Deloitte Ltd | 36. OceanaGold Waihi | 61. Willis Bond & Co Ltd |
| 12. Dentons Kensington Swan | 37. Pāmu Farms New Zealand | 62. WSP New Zealand |
| 13. Downer (NZ) Ltd | 38. Pfizer New Zealand Ltd | 63. Woolworths New Zealand |
| 14. Fonterra Co-operative Group | 39. Ports of Auckland Ltd | 64. Z Energy |
| 15. Foodstuffs NZ Ltd | 40. PowerNet Limited | |
| 16. Fujitsu New Zealand Ltd | 41. Rio Tinto (NZ Aluminium Smelters Ltd) | |
| 17. Genesis Energy Ltd | 42. Russell McVeagh | |
| 18. GlaxoSmithKline NZ Ltd | 43. Saatchi & Saatchi | |
| 19. Goodman New Zealand Ltd | 44. SBS Bank Group | |
| 20. Guardians of NZ Superannuation Ltd | 45. Sealord Group Ltd | |
| 21. IAG New Zealand Ltd | 46. SKYCITY Entertainment Group | |
| 22. Kiwi Property Group Ltd | 47. Southern Cross | |
| 23. KiwiRail | 48. Spark New Zealand | |
| 24. Lion New Zealand | 49. St John | |
| 25. Lotto New Zealand | 50. Silvereye Communications Ltd | |



The NZBPT Secretariat work from an office on the top floor of the Parliamentary Library Building shown here at dusk. The building is the oldest part of Parliament Buildings and was completed in 1899.

Photograph: Murray Hedwig

LIKE US ON
SOCIAL MEDIA



P 04 472 5365
F 04 472 2016
W www.nzbpt.nz

Chief Executive ce@nzbpt.nz
Executive Assistant ea@nzbpt.nz
General enquiries office@nzbpt.nz
COMMS enquiries COMMSINTERN@nzbpt.nz

Parliamentary Library Building,
Private Bag 18041,
Parliament Buildings,
Wellington 6160

